



TECHNICAL CIRCULAR No. 538 of 08th February 2019

To: All Surveyors/Auditors

Applicable to flag: All Flags

General cargo structure nomenclature

Reference: CONARINA Instructions

General cargo structure nomenclature

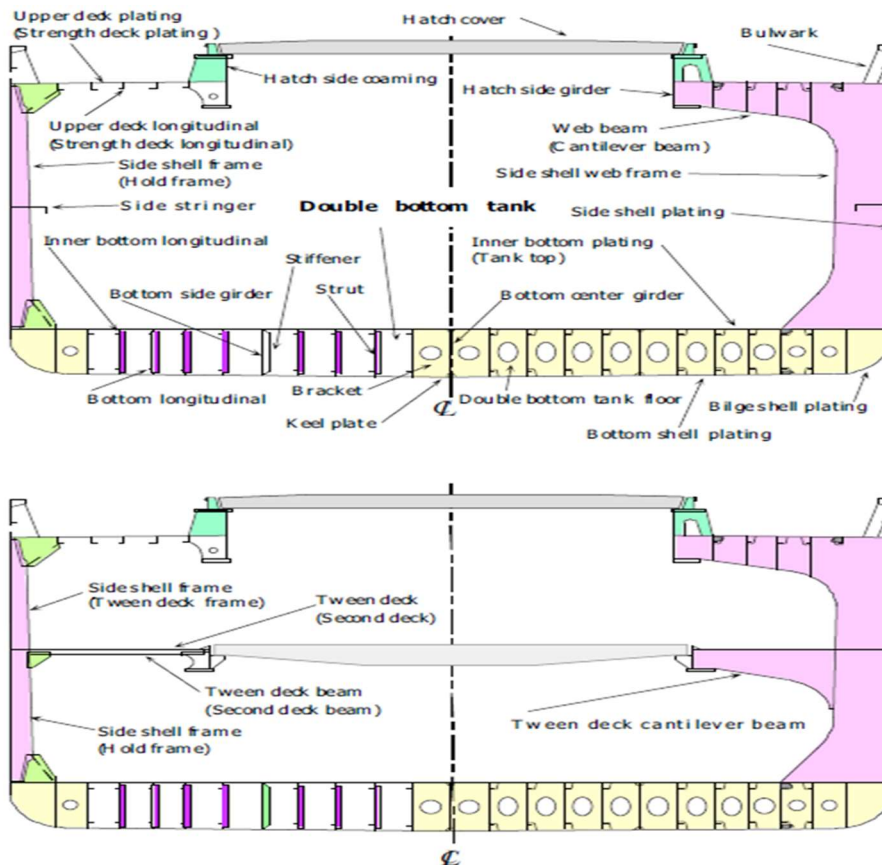


Fig. 1 Typical transverse section in way of cargo hold

Customer Service Center
5201 Blue Lagoon Drive, 9th. Floor,
Miami, Fl., 33126
Tel: 1 (305) 716 4116,
Fax: 1 (305) 716 4117,
E-Mail:

joel@conarinagroup.com

Technical Head Office
7111 Dekadine Ct.
Spring, Tx., 77379
Tel: 1 (832) 451 0185,
1 (713) 204 6380

E-Mail: vbozenovici@vcmaritime.com

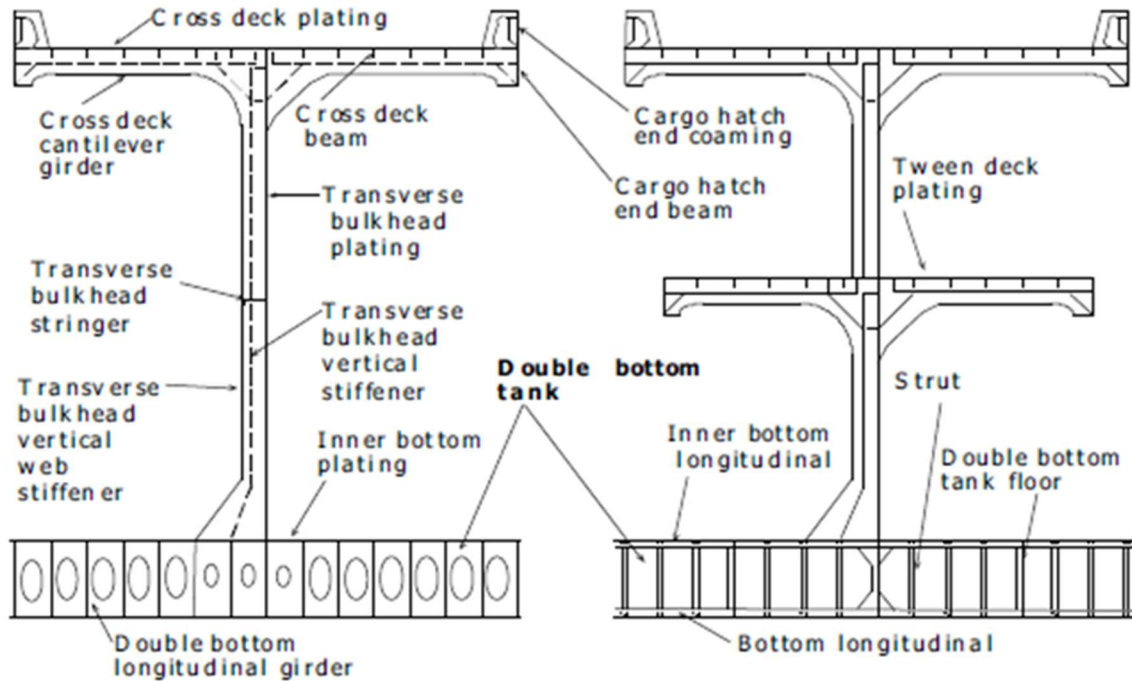


Fig. 2 Typical watertight bulkhead

REFERENCES:

- CONARINA Instructions

- ATTACHMENTS: No

kindest Regards,
 Val Bozenovici
 Naval Architect – Conarina Technical Director

*Customer Service Center
 5201 Blue Lagoon Drive, 9TH. Floor,
 Miami, Fl., 33126
 Tel: 1 (305) 716 4116,
 Fax: 1 (305) 716 4117,
 E-Mail:*

joel@conarinagroup.com

*Technical Head Office
 7111 Dekadine Ct.
 Spring, Tx., 77379
 Tel: 1 (832) 451 0185,
 1 (713) 204 6380*

E-Mail: vbozenovici@vcmaritime.com